

STANLEY®

FIXING SOLUTIONS



www.stanleytools.com

AN EXTENSIVE RANGE OF FIXINGS FOR ALL WALL TYPES

Welcome to the launch of the new STANLEY Fixings range. The range is designed to deliver fixing solutions, for a wide range of fixing tasks in every type of wall material. Our products are aimed at professional tradesmen and DIY'ers who expect the highest levels of quality, performance and reliability every time.



Insight, invention and innovation have always been at the heart of everything STANLEY do.

The tools have been in the hands of the men who built the world's greatest structures, from the Empire State Building, to the Petronas Towers, the tallest twin towers in the world.

They have been the choice of the professionals since 1843, and generations of proud householders have turned to the same tools, to achieve professional results in their own homes.

With our new range of fixings no job is too big or too small, so whether you are putting up lightweight pictures, or tackling heavy Garage doors, you know you can rely on STANLEY to help.

Quality

STANLEY is committed to quality manufacturing. Through its extensive technological expertise, STANLEY maintains its manufacturing quality to the highest possible level.

Manufactured in Europe

STANLEY's ISO 9001 certified production plant is located in Germany and has capacity to produce in excess of 60 million metal anchors. 133 members of staff work side-by-side to ensure the quality of the parts being produced.

R&D Department

STANLEY has its own Research & Development facilities looking after not only the factory organisation and tools, but more specifically responsible for the design of new patented products.

Its expert use of the latest available technologies allows STANLEY to develop innovative products that meet the expectations of the market in terms of quality, safety and swift installation.



STANLEY

HOW TO CHOOSE THE RIGHT FIXING

Think about the wall type you want to fix into

It is very easy to select the right fixing from the STANLEY range, all the packs are colour coded by the wall type you are fixing into.

PLASTERBOARD

Our extensive range of advanced metal anchors are designed especially for Hollow walls or plasterboard. The fixing expands inside the cavity and locks tight against the back of the wall providing a very secure grip. Look for the red packs.



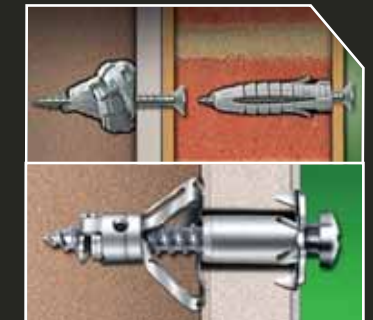
SOLID WALLS

We have a large range of strong Nylon and metal anchors to be used in solid walls and floors. The fixing expands inside the hole as the screw or bolt is threaded through gripping tight to the solid wall. Look for the blue packs.



FOR ALL WALL TYPES

If you are not sure what your walls are made from, the best fixing to use is our innovative multi material expanding metal anchor. It's easy to use and gives a very strong and secure grip in all wall materials. Look for the green packs



PROJECT KITS

When you have a specific project in mind, check out the STANLEY project kits. The range covers a variety of tasks from fixing heavy doors, TV's, shelves, cupboards, mirrors, pictures and more. Each kit has everything you need, all the fixings, screws and the correct drill bits, making it simple and easy to complete the job.



Think about the fixing size you need

The sizes are clearly marked on the front of the pack along with the drill bit to use should you need to drill a hole. Some fixings are so quick and easy to use, you don't need a drill. Just screw straight into the wall.

Fixings are available with and without screws and again the sizes are clearly marked. Follow the correct installation instructions. These are on the back of all packs and very easy and simple to follow.

The STANLEY range includes everything you need for every type of fixing job you can think of. From shelves and pictures up to heavy garage doors, satellite dishes and sanitary ware.



NEW PACKAGING AND POS



EASIER IDENTIFICATION OF THE RANGE

Our new product wall is clearly laid out with helpful, easy to read point of sale, to help you find the correct fixing quickly and easily.



EASY TO SHOP PACKAGING DESIGN

The STANLEY packaging is simple and easy to read. The packs are colour coded to help you choose the right fixing for the job.

Red for plasterboard, blue for solid walls, green for all wall types and orange for complete project kits.

CONTENTS

PLASTERBOARD

Classic Metal Fixing	06
Setting Tool	07
Self tapping Metal Fixing	08
Self tapping Nylon Fixing	09
Hammer in Hook	10
Metal Hammer-in Fixing	11

SOLID WALLS

No Plug solid Metal Fixing	12
Blue Tip Metal Screwbolt	14
Bolt Shield Anchor	15
Nylon Plug	16

ALL WALL TYPES

Multi Material Metal Fixing	18
Expanding Nylon Fixing	20
Hamer-in Nylon Fixing	21

PROJECT KITS

22

LARGE QUANTITY PACKS AND KITS

28

FIXINGS FOR PLASTERBOARD



CLASSIC METAL FIXING

EXPANDING METAL ANCHOR



WALL TYPE:	Hollow
LOAD RATING:	Medium/Heavy
MATERIALS:	<ul style="list-style-type: none"> • Plasterboard • Dry partitions • Hollow brick • Other hollow materials up to 45mm thick (cavity walls and lining walls)
PRODUCT BENEFITS:	<ul style="list-style-type: none"> • Single-piece rustproof construction The 3 parts are perfectly joined together • 'Umbrella' type anchoring system for better load holding capacity • Detachable head It disappears inside the partition

Perfectly cylindrical nut
Firmly holds the nut to the casing of the fixing preventing it from becoming detached during installation

Pre-bent legs
Easier to expand

Wide head and anti-rotation spikes
- Perfect finish and stability
- Prevents damage to the wall

Detachable head for easy removal
The head detaches from the casing of the fixing and disappears inside the cavity



Long-lasting anticorrosion treatment
Protects the fixing from corrosion for a long time

Wide star-shaped legs
Best distribution of the supporting area

INSTALLATION

Drill a hole matching the diameter of the anchor.

Insert anchor and screw in screw supplied.

Use the setting tool. Place over the screw and squeeze until resistance is felt.

Tighten the screw in place

SETTING TOOL

FOR ALL EXPANDING METAL FIXINGS



For best results use the dedicated setting tool when fixing expanding metal anchors into hollow walls or plasterboard. It is ergonomically designed for extra grip and comfort.

It's quick and easy to use especially when using a large amount of anchors

EXPANDING METAL ANCHOR

Cat No.	Pack Quantity	Diameter	Length	Min/Max thickness	Screw Type	Screw Length	Weight Guide
STF16006-XJ	10	11mm	36mm	6-13mm	Ph2	46mm	40kg
STF18106-XJ	10	11mm	50mm	6-16mm	Ph2	60mm	40kg
STF14104-XJ	5	8mm	33mm	6-13mm	Ph2/SL	40mm	25kg
STF14106-XJ	10	8mm	33mm	6-13mm	Ph2/SL	40mm	25kg
STF14206-XJ	10	8mm	46mm	10-24mm	Ph2/SL	53mm	25kg
STF16004-XJ	5	11mm	36mm	6-13mm	Ph2/SL	43mm	40kg
STF16206-XJ	10	13mm	75mm	16-45mm	Ph2/SL	82mm	50kg
STF18004-XJ	5	13mm	34mm	6-13mm	Ph2/SL	43mm	50kg
STF18006-XJ	10	13mm	34mm	6-13mm	Ph2/SL	43mm	50kg
STF71020X-XJ	60	8mm	33mm	6-13mm	Ph2/SL	40mm	25kg
	40	11mm	36mm	6-13mm	Ph2/SL	43mm	40kg

Cat No.	Pack Quantity	Diameter	Length	Min/Max thickness	Screw Type	Screw Length	Weight Guide
STF14205-XJ	5	8mm	33mm	6-13mm	Ph2/SL	40mm	25kg

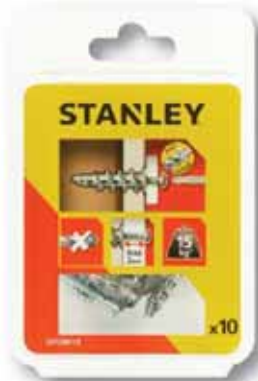


FIXINGS FOR PLASTERBOARD



METAL FIXING

SELF TAPPING METAL FIXING - NO DRILLING REQUIRED



WALL TYPE:	Hollow
LOAD RATING:	Light
MATERIALS:	<ul style="list-style-type: none"> Plasterboard Dry partitions Autoclaved aerated concrete Gypsum blocks
PRODUCT BENEFITS:	<ul style="list-style-type: none"> Fast and easy installation using an electric drill driver Self-tapping tip

Made of Zamak
Extra strong
and resilient



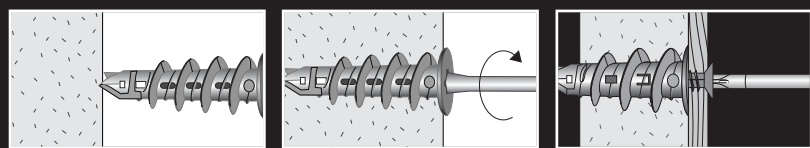
METAL SELF-TAPPING FIXING

Cat No.	Pack Quantity	Fixing Length	Min/Max thickness	Screw Type	Screw Length	Weight Guide
STF58004-XJ	4	39mm	2mm	Pz2	20mm	15kg
STF58100-XJ	4	39mm	-	Hooks	20mm	15kg
STF58010-XJ	10	39mm	2mm	Pz2	30mm	15kg
STF58030-XJ	30	39mm	2mm	Pz2	30mm	15kg

Can be used with different types of screws
Woodscrews, screws
for chipboard panels

INSTALLATION

For installation, you will require a screwdriver equipped with a No. 2 Phillips bit or an electric drill driver with torque and speed control (use a speed of between 400 to 800 rpm, and torque –of about 0.75 to 1 Nm).



Mark and position the fixing at the intended location.

Turn the fixing to drill through the plasterboard.

Keep on screwing the fixing in until resistance is felt confirming that the plug is correctly in place.

NYLON FIXING

SELF TAPPING NYLON FIXING - NO DRILLING REQUIRED



WALL TYPE:	Hollow
LOAD RATING:	Light
MATERIALS:	<ul style="list-style-type: none"> Plasterboard Dry partitions Autoclaved aerated concrete
PRODUCT BENEFITS:	<ul style="list-style-type: none"> Made of Nylon for added strength and resistance Fast installation Using an electric drill driver

Made of nylon
Excellent resistance
to thermal shocks



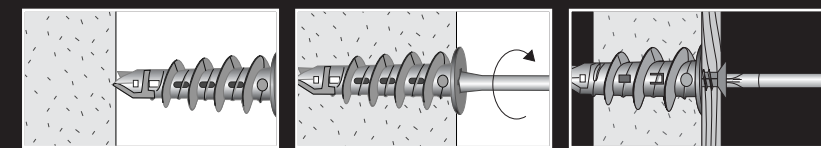
NYLON SELF-TAPPING FIXING

Cat No.	Pack Quantity	Fixing Length	Min/Max thickness	Screw Type	Screw Length	Weight Guide
STF30211-XJ	10	25mm	2mm	Pz2	25mm	9kg
STF30221-XJ	20	25mm	2mm	Pz2	25mm	9kg
STF30224-XJ	4	25mm	-	Hooks	25mm	9kg
STF30230-XJ	30	25mm	2mm	Pz2	25mm	9kg

Can be used with different types of screws
Woodscrews, screws
for chipboard panels

INSTALLATION

For installation, you will require a screwdriver equipped with a No. 2 Phillips bit or an electric drill driver with torque and speed control (use a speed of between 400 to 800 rpm, and torque –of about 0.75 to 1 Nm).



Mark and position the fixing at the intended location.

Turn the fixing to drill through the plasterboard.

Keep on screwing the fixing in until resistance is felt confirming that the plug is correctly in place.

FIXINGS FOR PLASTERBOARD



HAMMER IN HOOK



Hammer In Hook



WALL TYPE:	Hollow
LOAD RATING:	Light
MATERIALS:	<ul style="list-style-type: none"> • Plasterboard • Dry partitions • Gypsum blocks
PRODUCT BENEFITS:	<ul style="list-style-type: none"> • Fast and easy installation • No electric drill required • Just hammer in

HAMMER IN HOOK

Cat No.	Pack Quantity	Fixing Length	Min/Max thickness	Screw Type	Screw Length	Weight Guide
STF60110-XJ	10	-	-	-	-	10kg

INSTALLATION

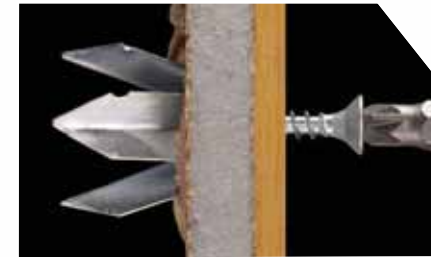


Position.

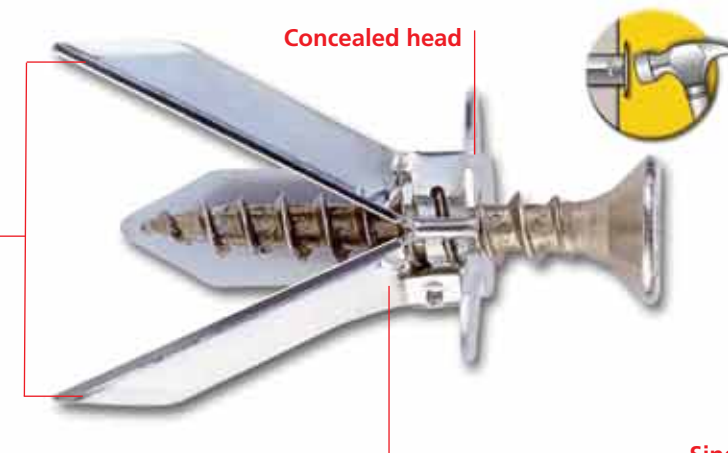


Hammer in...job done!

METAL HAMMER IN FIXING



3 legs that open at 120°
Better distribution of the load.
Anti-rotation design to prevent shearing of the wall panel



Concealed head



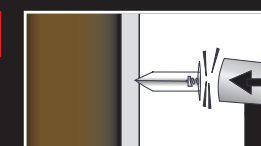
Single casing anchor
Made of rustproof steel.
Excellent load holding capacity

WALL TYPE:	Hollow
LOAD RATING:	Light
MATERIALS:	<ul style="list-style-type: none"> • Plasterboard • Autoclaved aerated concrete
PRODUCT BENEFITS:	<ul style="list-style-type: none"> • Extremely easy to install • No need for preliminary drilling • Just hammer the anchor in • Concealed head • Ideal for small decorative items

METAL HAMMER IN FIXING

Cat No.	Pack Quantity	Drill Diameter	Min/Max thickness	Drill Depth	Screw Type	Screw Length	Weight Guide
STF52010-XJ	10	30mm	10-13mm	-	PZ2	25mm	15kg

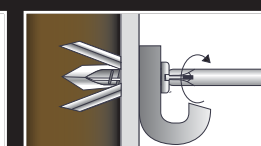
INSTALLATION



Position.



Hammer in.



Screw in...job done!

FIXINGS FOR SOLID WALLS



NO PLUG SOLID METAL WALL FIXING

THE FIRST FIXING FOR SOLID WALLS THAT DOESN'T NEED A PLUG



WALL TYPE:	Solid
LOAD RATING:	Medium
MATERIALS:	<ul style="list-style-type: none"> • Concrete • Solid blocks • Gypsum blocks
PRODUCT BENEFITS:	<ul style="list-style-type: none"> • Fast and easy installation • No electric drill required • Just screw in



High-Low Thread Design
for maximum grip and smooth entry



No Plug Required
Just drill and screw it



Self Cutting
forms its own
thread in the wall

One Piece Design
No plug required



Available in 2 sizes and 3 different screwheads
Including white, ideal when attaching white fittings to the wall



COUNTERSINK



WHITE COUNTERSINK

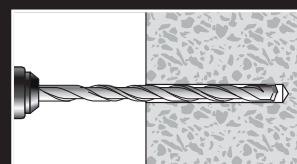


ROUNDED HEAD

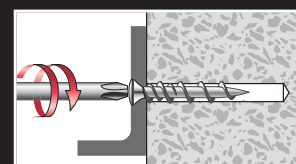
NO PLUG METAL FIXING

Cat No.	Pack Quantity	Diameter Drill Hole	Screw Length	Min/Max thickness	Min Drill Depth	Screw Type	Weight Guide
STF30010-XJ	10	5mm	32mm	5mm	27mm	Countersink	30kg
STF30018-XJ	10	5mm	50mm	25mm	25mm	Countersink	30kg
STF30019-XJ	5	5mm	50mm	25mm	25mm	Countersink	30kg
STF30020-XJ	10	5mm	32mm	3mm	27mm	Pan Head	30kg

INSTALLATION



Drill the correct size hole



Screw fixing straight in to drilled hole. No need for a plug

BLUE TIP METAL SCREWBOLT

STRONG AND SECURE HEAVY DUTY FIXING



ETA Approved
for use in cracked concrete



WALL TYPE:	Solid
LOAD RATING:	Heavy
MATERIALS:	<ul style="list-style-type: none"> • Concrete • Solid blocks
PRODUCT BENEFITS:	<ul style="list-style-type: none"> • Removable and re-usable <p>Designed for fixing heavy fittings close to the edge of the wall or into cracked concrete</p>



Unique one piece design
gives full grip along the total length of the bolt without expansion



Ratchet Teeth on the Head
lock tight against the fitting



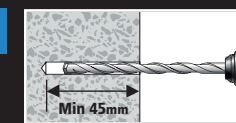
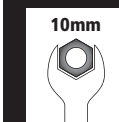
Ideal for heavy garage doors or railings and any other fitting when attaching to solid or cracked concrete



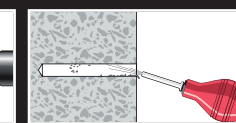
BLUE TIP METAL SCREWBOLT

Cat No.	Pack Quantity	Diameter Drill Hole	Screw Length	Min/Max thickness	Min Drill Depth	Screw Type	Weight Guide
STF46003-XJ	4	6mm	60mm	5mm	55mm	Screw Bolt	150kg
STF46005-XJ	2	8mm	50mm	25mm	45mm	Screw Bolt	180kg
STF46007-XJ	2	8mm	75mm	25mm	70mm	Screw Bolt	200kg
STF46009-XJ	2	10mm	75mm	3mm	70mm	Screw Bolt	260kg

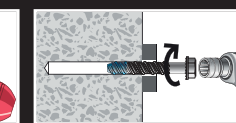
INSTALLATION



Drill the correct size hole



Clear out debris from the drilled hole



Place bolt in hole and tighten with the correct sized spanner



Minimum depth required

FIXINGS FOR SOLID WALLS

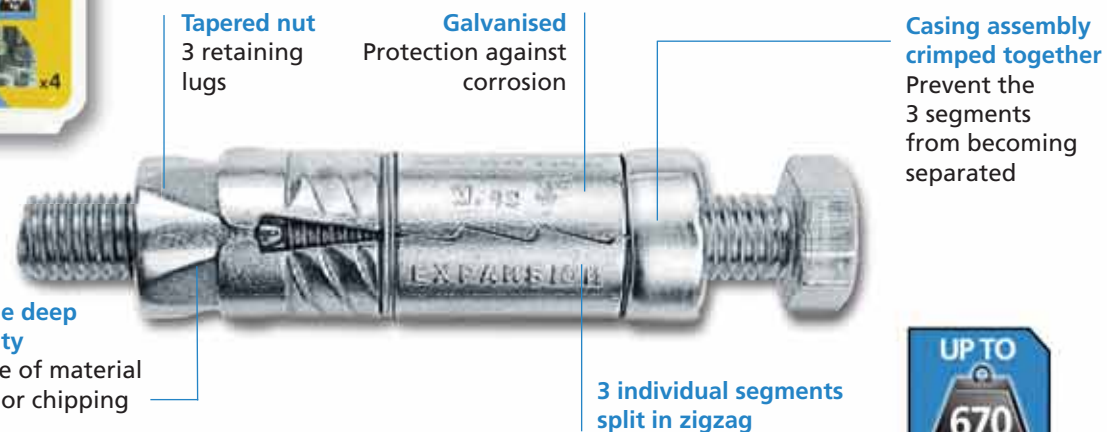


BOLT SHIELD ANCHOR

USE FOR CONCRETE, BRICK, SOLID BREEZE BLOCKS



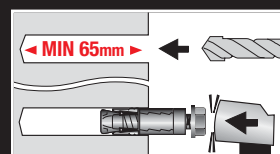
WALL TYPE:	Solid
LOAD RATING:	Heavy
MATERIALS:	<ul style="list-style-type: none"> • Solid Breeze blocks, brick, sandstone, concrete, stone and old solid walls and building materials
PRODUCT BENEFITS:	<ul style="list-style-type: none"> • Die-cast metal components Provide a perfect grip • Galvanised surface Protects from corrosion • Removable



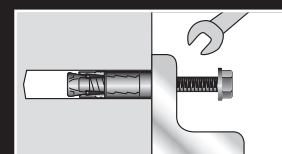
BOLT SHIELD ANCHOR

Cat No.	Pack Quantity	Diameter Drill Hole	Plug Length	Min/Max thickness	Min Drill Depth	Screw Type	Screw Length	Weight Guide
STF40614-XJ	4	12mm	45mm	10mm	50mm	10 Hex	55mm	240kg
STF41602-XJ	2	12mm	45mm	-	50mm	Hook	-	240kg
STF40814-XJ	4	14mm	50mm	10mm	55mm	13 Hex	65mm	500kg
STF41802-XJ	2	14mm	50mm	-	55mm	Eye Hook	-	500kg
STF41012-XJ	2	16mm	60mm	20mm	65mm	17 Hex	90mm	670kg

INSTALLATION



Drill a hole according to the specified depth and diameter. Remove the bolt and insert the casing in the hole. Use a hammer, if necessary.



Position the item to be fixed and tighten it in place with the bolt.

THROUGH BOLT

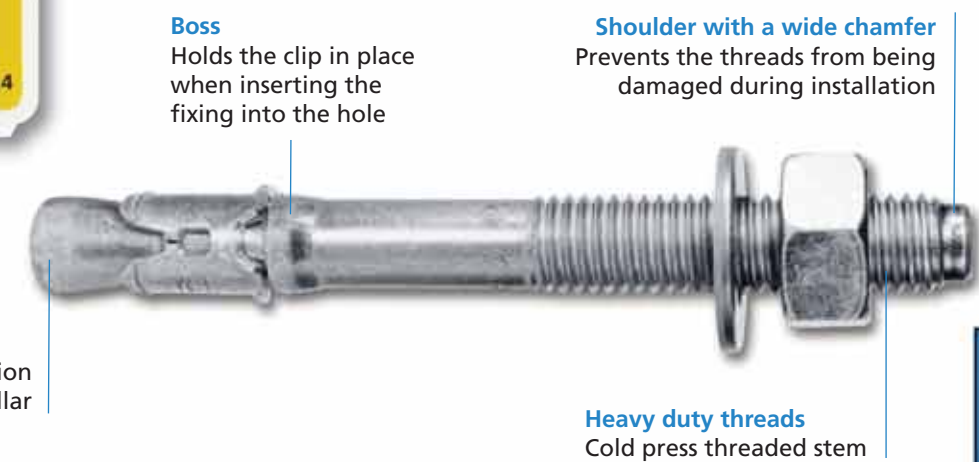
STRONG AND SECURE HEAVY DUTY FIXING



ETA Approved for use in cracked concrete



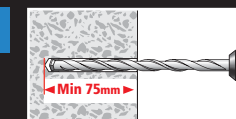
WALL TYPE:	Solid
LOAD RATING:	Heavy
MATERIALS:	<ul style="list-style-type: none"> • Solid Concrete, hard stone • Hollow partition with thick walls
PRODUCT BENEFITS:	<ul style="list-style-type: none"> • Fast installation • High safety level fixing Self-expansion anchoring system • Heavy duty long threaded stem Cold pressed components



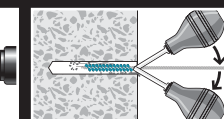
THROUGH BOLT

Cat No.	Pack Quantity	Diameter Drill Hole	Plug Length	Min/Max thickness	Min Drill Depth	Screw Type	Screw Length	Weight Guide
STF44404-XJ	4	8mm	65mm	10mm	70mm	M8	65mm	360kg
STF44902-XJ	2	10mm	120mm	40mm	75mm	M10	120mm	760kg
STF44604-XJ	2	12mm	45mm	40mm	55mm	M8	95mm	360kg

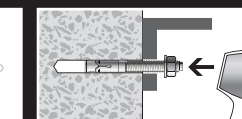
INSTALLATION



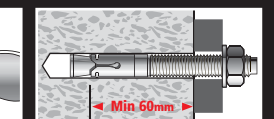
Drill a hole matching the diameter of the anchor.



Thoroughly clean out any debris from the cavity.



Insert anchor into hole with washer and nut already fitted. Use a hammer if necessary until washer makes contact with item to be fixed.



Tighten the anchor in place using a torque wrench.

FIXINGS FOR SOLID WALLS



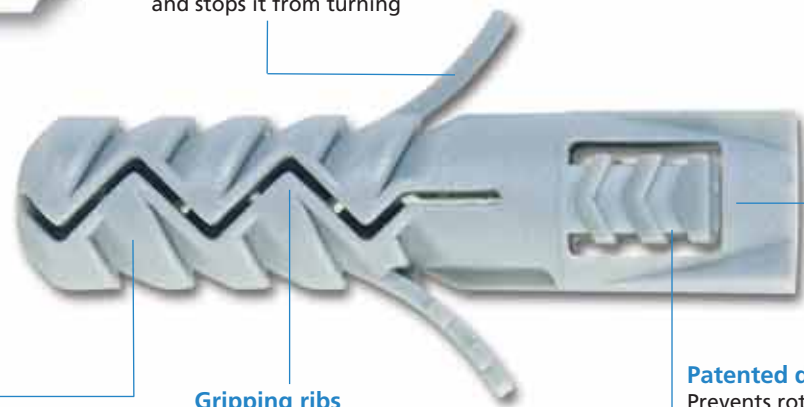
NYLON FIXING

USE FOR CONCRETE, BRICK, SOLID BREEZE BLOCKS



WALL TYPE:	Solid
LOAD RATING:	Medium/Heavy
MATERIALS:	<ul style="list-style-type: none"> • Solid Concrete, brick, solid breeze block
PRODUCT BENEFITS:	<ul style="list-style-type: none"> • Maximum expansion within the wall Thanks to its 'crocodile jaws' design • Made of Nylon Better resistance from thermal shocks, better insulation from electric current, less effort required for screwing the fastener in • Plug equipped with anti-rotation and anti-pull-out system Thanks to its square head and lugs

Anti pull-out lugs
Allows centring of the plug and stops it from turning



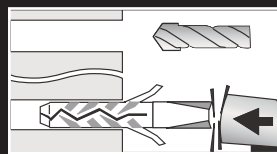
Anti-rotation square head
Keeps the plug in place when screwing the fastener in

Zigzag splitting
Multiplies by ten the expansion of the plug within the wall

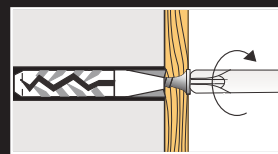
Gripping ribs
Perfectly holds the plug within the material

Patented design tabs
Prevents rotation and facilitates expansion within the material

INSTALLATION



Drill a hole according to the diameter stamped on the body of the plug. Insert the plug into the wall. If necessary, tap in place using a hammer.



Position the item to be fixed and tighten it in place with the screw.

NYLON PLUGS WITH SCREWS

Cat No.	Pack Quantity	Diameter Drill Hole	Plug Length	Min/Max thickness	Min Drill Depth	Screw Type	Screw Length	Weight Guide
STF20125-XJ	25	5mm	25mm	5mm	35mm	PZ1	30mm	50kg
STF20215-XJ	15	6mm	30mm	5mm	40mm	PZ2	35mm	60kg
STF20312-XJ	12	7mm	30mm	10mm	40mm	PZ2	40mm	70kg
STF20910-XJ	10	8mm	40mm	10mm	55mm	PZ2	50mm	80kg
STF21110-XJ	10	10mm	50mm	10mm	65mm	PZ3	60mm	100kg



NYLON PLUGS WITHOUT SCREWS

Cat No.	Pack Quantity	Diameter Drill Hole	Plug Length	Min/Max thickness	Min Drill Depth	Screw Type	Min Screw Length	Weight Guide
STF20530-XJ	30	5mm	25mm	-	35mm	-	30mm	50kg
STF20630-XJ	30	6mm	30mm	-	40mm	-	35mm	60kg
STF20725-XJ	25	7mm	30mm	-	40mm	-	40mm	70kg
STF20820-XJ	20	8mm	40mm	-	55mm	-	50mm	80kg



MIXED NYLON PLUGS WITH SCREWS

Cat No.	Pack Quantity	Diameter Drill Hole	Plug Length	Min/Max thickness	Min Drill Depth	Screw Type	Min Screw Length	Weight Guide
STF20565-XJ	30	5mm	25mm	-	35mm	-	30mm	50kg
	20	6mm	30mm	-	40mm	-	35mm	60kg
STF20785-XJ	25	7mm	30mm	-	40mm	-	40mm	70kg
	15	8mm	40mm	-	55mm	-	50mm	80kg

MIXED NYLON PLUGS WITHOUT SCREWS

Cat No.	Pack Quantity	Diameter Drill Hole	Plug Length	Min/Max thickness	Min Drill Depth	Screw Type	Min Screw Length	Weight Guide
STF20560-XJ	60	5mm	25mm	-	35mm	-	30mm	50kg
	40	6mm	30mm	-	40mm	-	35mm	60kg
STF20780-XJ	50	7mm	30mm	-	40mm	-	40mm	70kg
	30	8mm	40mm	-	55mm	-	50mm	80kg

MIXED NYLON PLUGS WITH SCREWS

Cat No.	Pack Quantity	Diameter Drill Hole	Plug Length	Min/Max thickness	Min Drill Depth	Screw Type	Screw Length	Weight Guide
STF78300-XJ	100	5mm	25mm	5mm	40mm	Pz1	30mm	50kg
	80	6mm	30mm	5mm	40mm	Pz2	35mm	60kg
	60	7mm	30mm	10mm	40mm	Pz2	40mm	70kg
	30	8mm	40mm	10mm	55mm	Pz2	50mm	80kg



FIXINGS FOR ALL WALL TYPES



MULTI MATERIAL METAL FIXING

EXPANDING METAL ANCHOR



WALL TYPE:	Multi materials
LOAD RATING:	Medium/Heavy
MATERIALS:	<ul style="list-style-type: none"> • Double and single plasterboard • Parpaing • Hollow brick • Concrete
PRODUCT BENEFITS:	<ul style="list-style-type: none"> • Single-piece rustproof construction The 3 parts are perfectly joined together • 'Umbrella' type anchoring system for better load holding capacity • Detachable head It disappears inside the partition

It's strong
Engineered with extra grip points for rock solid fixing

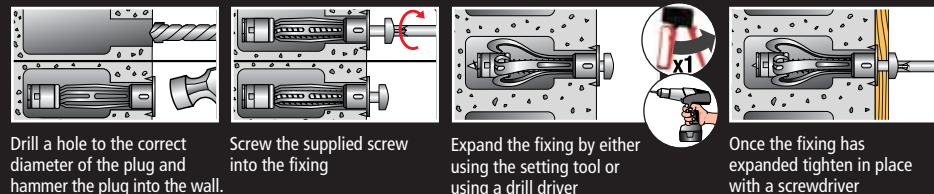


It's easy to use!
New screw design makes fixing effortless and fast.
2 Sizes ensure it works in most materials

DETACHABLE
The head detaches from the casing of the fixing and disappears inside the cavity

INSTALLATION

FOR SOLID WALLS



Drill a hole to the correct diameter of the plug and hammer the plug into the wall.

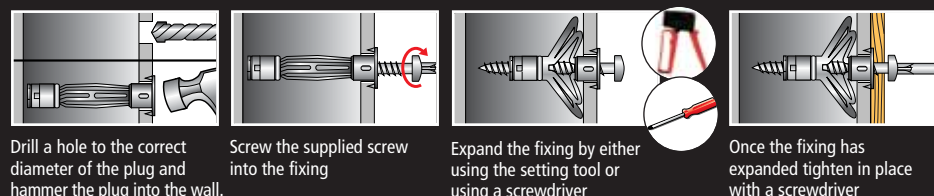
Screw the supplied screw into the fixing

Expand the fixing by either using the setting tool or using a drill driver

Once the fixing has expanded tighten in place with a screwdriver

INSTALLATION

FOR HOLLOW WALLS



Drill a hole to the correct diameter of the plug and hammer the plug into the wall.

Screw the supplied screw into the fixing

Expand the fixing by either using the setting tool or using a screwdriver

Once the fixing has expanded tighten in place with a screwdriver

New innovative multi material metal fixing fits all common wall types

The new STANLEY multi material fixing is the quick and easy way to choose the right fixing, its unique folding mechanism allows it to work in different wall types.

The multi material metal fixing is available in 2 sizes - 8mm for all materials including plasterboard up to 13mm thickness and 10mm for all materials and plasterboard up to 26mm thickness



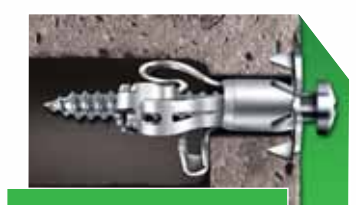
Specially designed to fit all common wall types



Works with or without a setting tool



DOUBLE & SINGLE PLASTERBOARD



PARPAING



HOLLOW BRICK



CONCRETE

MULTI MATERIAL METAL FIXING

Cat No.	Pack Quantity	Diameter	Length	Min/Max thickness	Min Drill hole depth	Screw Length	Weight Guide
STF100816-XJ	16	8mm	37mm	20mm	30mm	50mm	35-70kg
STF100810-XJ	10	8mm	37mm	20mm	37mm	50mm	35-70kg
STF101010-XJ	10	10mm	60mm	40mm	60mm	80mm	50-100kg

FIXINGS FOR ALL WALL TYPES

LARGE QUANTITY PACKS AND KITS



EXPANDING NYLON FIXING

EXPANDING NYLON ANCHOR



Tapered rings with 6 alternating ridges
Offset at 30° to lock the plug in place

WALL TYPE:	Solid/Hollow/Friable
LOAD RATING:	Light/Medium/Heavy
MATERIALS:	<ul style="list-style-type: none"> • Solid Concrete, solid breeze block, solid brick • Hollow Plasterboard, hollow brick, hollow breeze blocks • Combination of Hollow and Solid Materials
PRODUCT BENEFITS:	<ul style="list-style-type: none"> • Stem surface featuring overlapping tapered rings Enhances the wedge effect within the material

Solid pre-drilled tip
Guides the screw along the threads and helps to lock the plug in place



Ridges
The shape and location of the ridges control the deformation path of the plug

Lugs

Provide better support during installation on vertical surfaces (ceilings)

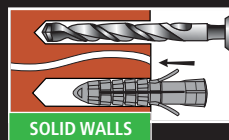
Flange

Provides optimal load holding capacity and a perfect finish

4 locking tabs
Lock the plug in place to prevent it from rotating

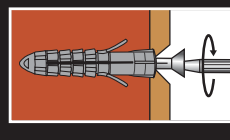


INSTALLATION

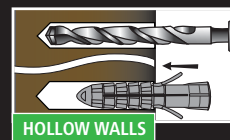


SOLID WALLS

Drill a hole according to the diameter stamped on the body of the plug and insert the plug into the wall.

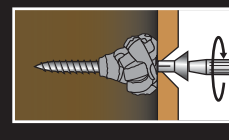


If necessary, tap in place using a hammer. Position the item to be fixed and screw it in place.



HOLLOW WALLS

Drill a hole according to the diameter stamped on the body of the plug and insert the plug into the wall.



If necessary, tap in place using a hammer. Position the item to be fixed and screw it in place.



Home Starter Kit x63 Pieces

STF78100

- 20x Red Nylon Fixings ø6 x 30mm
- 15x Blue Nylon Fixings ø8x 40mm
- 10x Metal Self Tapping Fixing 30mm
- 10x Nylon Self Tapping Fixing 25mm
- 8x Multi Material Metal Fixings 37mm

Mini Starter Kit x28 Pieces

STF27680

- 15 x Blue Nylon Fixings ø6 x 30mm
- 10 x Blue Nylon Fixings ø8 x 40mm
- 1 x Screw bit PZ2 50mm
- 1 x Drill bit ø6-8mm x 120mm

2NYLON PACKS WITH SCREWS

Cat No.	Pack Quantity	Diameter	Length	Min/Max thickness	Min Drill hole depth	Screw Length	Weight Guide
STF27524-XJ	24	5mm	25mm	10mm	35mm	30mm	10-25kg
STF27615-XJ	14	6mm	30mm	10mm	40mm	40mm	20-55kg
STF27712-XJ	12	7mm	35mm	10mm	45mm	50mm	20-60kg
STF27810-XJ	10	8mm	40mm	10mm	50mm	50mm	20-70kg
STF27012-XJ	10	10mm	50mm	10mm	60mm	60mm	30-90kg

2NYLON MINI STARTER KIT

Cat No.	Pack Quantity	Diameter	Length	Min/Max thickness	Min Drill hole depth	Screw Length	Weight Guide
STF27680-XJ	28	8mm	40mm	10mm	50mm	50mm	20-70kg

MIXED 2NYLON PACKS WITH SCREWS

Cat No.	Pack Quantity	Diameter	Length	Min/Max thickness	Min Drill hole depth	Screw Length	Weight Guide
STF27050-XJ	50	5-7mm	25-35mm	10mm	-	30-50mm	15-60kg
STF78400-XJ	250	5-8mm	25-40mm	20mm	-	30-50mm	15-70kg
STF27040-XJ	40	7-10mm	30-40mm	10mm	-	50-60mm	20-90kg

MIXED 2NYLON PACKS WITHOUT SCREWS

Cat No.	Pack Quantity	Diameter	Length	Min/Max thickness	Min Drill hole depth	Screw Length	Weight Guide
STF27101-XJ	100	5-7mm	25-35mm	-	-	30-50mm	15-60kg
STF27070-XJ	70	7-10mm	35-50mm	-	-	50-60mm	20-90kg



COMPLETE PROJECT KITS



When you have a specific project in mind, check out the STANLEY project kits. The range covers a variety of tasks from fixing heavy doors, TVs, shelves, cupboards, mirrors, pictures and more, in different wall types.

Each kit has everything you need, all the fixings, screws and the correct drill bits, making it simple and easy to complete the job.

PROJECT KITS

Cat No.	Type of Kit	Material	Pack Quantity	Min/Max thickness	Weight Guide
STF78116-XJ	Radiator	Multi Material	10	-	40-80kg
STF78101-XJ	Bathroom	Multi Material	19	-	15-70kg
STF78107-XJ	Mirror/Picture	Multi Material	10	10mm	20-55kg
STF78108-XJ	Shelves	Multi Material	15	10mm	20-70kg
STF78109-XJ	Curtains	Multi Material	8	10mm	20-70kg
STF78102-XJ	Hanging Basket	Multi Material	8	10mm	20-70kg
STF78103-XJ	Garden Gate	Solid Walls	5	10mm	190kg
STF78104-XJ	Outside Light	Solid Walls	6	10mm	80kg
STF78113-XJ	Window	Solid Walls	4	100mm	90kg
STF78105-XJ	Flatscreen TV	Solid Walls	8	10mm	80kg
STF78114-XJ	Sanitary	Solid Walls	4	-	80kg
STF78115-XJ	Wash Basin	Solid Walls	4	15-35mm	100kg
STF78106-XJ	Flatscreen TV	Hollow Walls	8	-	40kg
STF78110-XJ	Hollow Door	Hollow Walls	7	5mm	10kg
STF78111-XJ	Hollow Door	Hollow Walls	7	5mm	10kg
STF78112-XJ	Caravan	Hollow Walls	12	5mm	10kg



PROJECT KITS FOR HOLLOW WALLS



Flatscreen TV Kit x8 Pieces

STF78106

- x6 Multi Material Metal Fixing $\phi 11 \times 36\text{mm}$
- Screw Ph2/SL M5 43mm
- x1 Screw bit Ph2 50mm
- x1 Drill bit $\phi 11\text{mm}$



Hollow Door x7 Pieces

STF78110

- 5x Butterfly Plastic Fixings 25mm
- Screw Pz2 $\phi 3.5 \times 25\text{mm}$
- 1x Screw bit Pz2 50mm
- 1x Drill bit $\phi 8 \times 120\text{mm}$



Static Caravan x12 Pieces

STF78112

- 10x Butterfly Metal Fixings 16mm
- Screw Ph2/SL M4 25mm
- 1x Screw bit Ph2 50mm
- 1x Drill bit $\phi 8 \times 120\text{mm}$

COMPLETE PROJECT KITS



PROJECT KITS FOR ALL WALL TYPES



Radiator Kit x10 Pieces

STF78116
4x Multi Material Metal Fixings $\varnothing 8 \times 33\text{mm}$
4x Grey Nylon Fixings 40mm
1x Screw bit Pz2 50mm
1x Drill bit $\varnothing 8 \times 120\text{mm}$



Bathroom Kit x19 Pieces

STF78101
4x Metal Self Tapping Fixings 39mm
4x Multi Material Metal Fixings $\varnothing 8 \times 33\text{mm}$
4x Blue Nylon Fixings $\varnothing 6 \times 30\text{mm}$
4x Blue Nylon Fixings $\varnothing 8 \times 40\text{mm}$
1x Screw bit Pz2 50mm
2x Drill bit $\varnothing 6 \times 120\text{mm}$
2x Drill bit $\varnothing 8 \times 120\text{mm}$



Mirror Kit x10 Pieces

STF78107
8x Red Nylon Fixings $\varnothing 6 \times 30\text{mm}$
Screw Pz2 $\varnothing 4 \times 40\text{mm}$
1x Screw bit Pz2 50mm
1x $\varnothing 6 \times 100\text{mm}$



Shelving Kit x15 Pieces

STF78108
6x Blue Nylon Fixings $\varnothing 6 \times 30\text{mm}$
Screw Pz2 $\varnothing 4 \times 40\text{mm}$
6x Blue Nylon Fixings $\varnothing 8 \times 40\text{mm}$
Screw Pz2 $\varnothing 5 \times 50\text{mm}$
1x Screw bit Pz2 50mm
1x Drill bits $\varnothing 6 \times 100\text{mm}$
1x Drill bits $\varnothing 8 \times 120\text{mm}$



Curtain Rail Kit x8 Pieces

STF78109
6x Blue Nylon Fixings $\varnothing 8 \times 40\text{mm}$
Screw Pz2 $\varnothing 5 \times 50\text{mm}$
1x Screw bit Pz2 50mm
1x Drill bit $\varnothing 8 \times 120\text{mm}$



Hanging Basket Kit x8 Pieces

STF78102
6x Blue Nylon Fixings $\varnothing 8 \times 50\text{mm}$
Screw Pz2 $\varnothing 5 \times 50\text{mm}$
1x Screw bit Pz2 50mm
1x Drill bit $\varnothing 8 \times 120\text{mm}$

PROJECT KITS FOR SOLID WALLS



Garden Gate Kit x5 Pieces

STF78103
4x Through Bolt M6 $\varnothing 6 \times 60\text{mm}$
1x Drill bit $\varnothing 6 \times 100\text{mm}$



Outside Light x6 Pieces

STF78104
4x Nylon Fixings $\varnothing 8 \times 40\text{mm}$
Screw Pz3 $\varnothing 6 \times 50\text{mm}$
1x Screw bit Pz3 50mm
1x Drill bit $\varnothing 8 \times 120\text{mm}$



Window Kit x4 Pieces

STF78113
4x PVC Frame Fixing Pz3 M6 150mm



Flatscreen TV Kit x8 Pieces

STF78105
x6 Nylon Fixings $\varnothing 8 \times 40\text{mm}$
Screw Pz3 $\varnothing 6 \times 50\text{mm}$
x1 Screw bit Pz3 50mm
x1 Drill bit $\varnothing 8 \times 120\text{mm}$



Pedestal/Sanitary Kit x4 Pieces

STF78114
2x Pedestal Plug with Screw Bolt 10mm/SL 80mm
1x Screw bit SL 50mm
1x $\varnothing 8\text{mm} \times 120\text{mm}$



Washbasin Kit x4 Pieces

STF78115
2x Specialist Wash Basin Screw M8 110mm
2x Nylon Fixings 60mm

STANLEY

STANLEY Black & Decker UK Ltd

210 Bath Road, Slough,
Berkshire SL1 3YD

Customer Service Phone:

01753 567055

Fax: 01753 572112

www.stanleytools.com

All rights reserved. Neither this catalogue nor its text, illustrations, drawings or any part thereof, may be reproduced, stored in a retrieval system, photocopied, recorded or transmitted in any form, whether electronic or otherwise, without our consent.

To the best of our knowledge, all descriptions and illustrations contained in this catalogue are correct at the time of going to print. We cannot, however, be held liable for any inaccuracies of description or illustration and reserve the right to change specifications without notification.

© STANLEY Works 2013/14.

